



DesignTO Festival 2025

HOST VENUE INFORMATION PACKAGE

For use in conjunction with the *Call for Guest Designers*.

This document is organised by the three (3) types of venue spaces available:

- A **window installation** runs the whole duration of Festival Week, and is visible to the public 24 hours a day from the outside of the venue. Depending on the space, the installation may also be viewable from inside the venue during regular business/gallery hours. **See venues # W1 - W25.**
- An **event** runs one day during Festival Week, for a set period of time. Events can include a talk, a product launch, film screening, or a workshop. **See venues # V1 - V8.**
- An **exhibition** runs more than one day during Festival Week. It is open to the public during regular business/gallery hours, and may include a window component. It can start before Festival Week, and end after Festival Week. It may also include an opening or closing reception, or artist/designer's talk. **See venues # X1 - X17.**

Please identify your top 3 venue choices with your submission.

We will try our best to pair you with one of these choices. Please note that while we try our best to create successful outcomes for all artists/designers, we are not able to guarantee that everyone will be paired.

Email any questions to Programs Assistant Kiran Qureishi at kiran@designto.org with this subject line: **Artist/Designer Call + your name.**

Version 2 - August 2024

DesignTO Festival | January 24 - February 2, 2025 | DesignTO.org

WINDOW INSTALLATION

A **window installation** runs the whole duration of Festival Week, and is visible to the public 24 hours a day from the outside of the venue. Depending on the space, the installation may also be viewable from inside the venue during regular business/gallery hours.

W1. gravitypope

1010 Queen Street West

Window Installation

Description: The available window is facing Queen Street West near the corner of Ossington. The vestibule is rectangular. The ceiling area is open and slightly larger than the top of the window frame. There is a power outlet available. Small light fixtures are hanging down into the space.

Dimensions:

Vestibule = 27" D x 190.75" W x 97.5" H

Preference: Prefer artists who work in textiles, fashion, clothing, footwear, style, interior design, industrial design and patterns, but are open to new concepts as well.

Website: www.gravitypope.com



W2. Lightform

267 Niagara Street
Window Installation

Description: Offering east-facing windows on the north end of the showroom on Niagara Street and Richmond Avenue.

Dimensions:

Window 1 = 76.5" W x 86" H

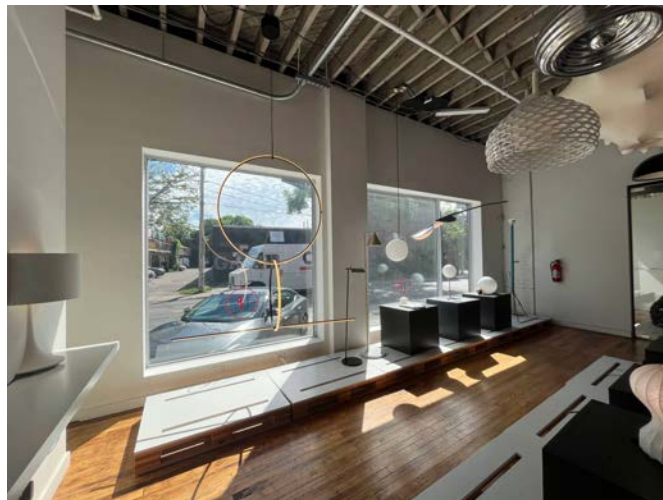
Window 2 = 116" W x 86" H

48" Depth space by windows for artwork display

Ceilings = 12' H

Preference: Prefer artists who work in art or furniture.

Website: <https://www.lightformshop.com>



W3. gh3

55 Ossington Avenue
Window Installation

Dimensions:

Window = 8' W x 9' H

Transom Window = 11'-6" W x 3'-6" H

Space behind (interior) = 5' D x 8'-0" W

Space in front (exterior covered) = 4'-10" D x 8'-0 W

Preference: Prefer to display large scale art, installation or sculpture work, integrate covered space as well as an installation that could provide some privacy screening to the office behind, without blocking all light.

Website: <https://www.gh3.ca>



W4. Akb Architects

182d St Helens Avenue

Window Installation

Barrier-free venue / wheelchair accessible from the street

Dimensions:

Window = 8' W x 7' H

Clear area behind the window = 8' W x 4' D

Ceilings = 16' H with exposed trusses, offering the opportunity for something to be suspended.

Viewing area in front of window = 18' W by 9' D

Preference: Interested in partnering with an established designer or artist that uses natural, organic, experimental and/or sustainable materials. Welcome artists from all cultural backgrounds with a preference for Indigenous artists.

Website: <https://www.akb.ca>



W5. Boychuk Fuller Inc.

27R Fern Avenue

Window Installation

Dimensions:

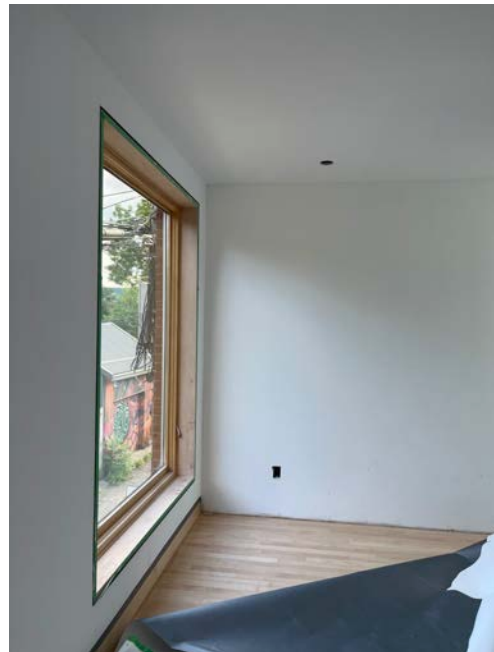
Main window = 64"w x 79.5"H

Floor space in front of the window = 18" D x 72"H

Potential to use the second window which is 25" W x 79.5"H with 8-10"x 25" of floor space.

Note: Both windows are on the second floor.

Website: boychukfuller.com



W6. The Sumach by Chartwell

146 Sumach Street

Window Installation

Barrier-free venue / wheelchair accessible from the street

Description:

The Sumach is a 12-story modern condo apartment-style independent senior residence with over 300 residents. Opportunity for a lobby window installation and possibly the interior of the lobby if the designer is so inclined.

Possibility of an associated event (e.g. artist talk) hosted by the venue.

Dimensions:

77.5" H x 76.75" W window visible from inside and outside 24/7

The size of the floor space in front of the window is 305" D

Website: chartwell.com



W7. Dundas Euclid Animal Hospital

840 Dundas Street West

Window Installation

Barrier-free venue / wheelchair accessible from the street

Description: A large window area but not a lot of space in front of the window as there is seating in the nook in front of the window. Ideally something that can be hung or something that is smaller in size would work best in the space. Please take into consideration that the venue is an animal hospital and anything that sits on the floor will be at risk of getting peed on! Chairs can be moved to make space for the piece. Wheelchair accessible when ramp is brought out. The ramp is not there at all times.

Dimensions:

Window = 78" H x 62" W

Space in front of window = 60" W x 20" D

Height of window = 78"

Width of window = 62"

Website: www.my-petdoctor.com



W8. Softhouse

908A Kingston Road

Window Installation

Barrier-free venue / wheelchair accessible from the street

Description: Large window in our storefront available for an installation. There is a shelf along the inside of the window. On the right side of the window (from the street view), the inside shelf forms an L-shape. The shelf inside the left-side window (from street view) is 7 inches deep. Some of the shelf space will be used to display products as in the photos, however the amount of items/work around the installation can be reduced.

Dimensions:

Window = 160" W x 73" H (Each pane is 80" W)

Shelf = 19" D x 75" W

Preference: Prefer art but open to all types of work.

Website: www.softhouseshop.com



W9. Storm Horse Tattoo

837 Dundas Street West (Main Floor)

Window Installation

Barrier-free venue / wheelchair accessible from the street

Description: Large rectangular window facing Dundas Street. Posters on the window will not be present at the time of the installation

Dimensions:

117" H x 56" W x 5" D

Preference: Anything that can be suspended.

Website: Stormhorsetattoo.com



W10. Design Fabrication Zone

110 Bond Street

Window Installation

Barrier-free venue / wheelchair accessible from the street

Description: The window is located in 'The Gallery' room on the ground floor of the building. Window installations would be limited to the window and need to be freestanding.

Dimensions:

Window = 84" H x 100" W x 17" D of ledge

Room = 18' x 12' and can accommodate someone working on the window install temporarily.

Preference: Prefer work oriented toward digital fabrication such as 3D printing, laser cutting, cnc or other dig fab equipment that would fit well with their member audience and students on campus!

Website: <https://www.torontomu.ca/zone-learning/design-fabrication-zone/>



W11. Collective Arts Toronto

777 Dundas Street West

Window Installation

Barrier-free venue / wheelchair accessible from the street

Dimensions:

Front window = 5'10" H x 4'1" W

Front side window = 5'10" H x 8' W

Side/patio window = 4'8" H x 9'5" W

Website: <https://collectiveartscreativity.com>



W12. Scout Ltd

405 Roncesvalles Avenue

Window Installation

Barrier-free venue / wheelchair accessible from the street

Dimensions:

Window = 28.5" x 58", Approx 160" H

Floor space = 79" L x 48" W and narrows into 25" near the front of the window

Only one window available.

Website: iheartscout.com



W13. Michelle Ross Studio

197 Sorauren Avenue

Window Installation

Barrier-free venue / wheelchair accessible from the street

Description: Located on the corner of Sorauren Avenue and Fern Avenue. The window area and sill are available for use on both the front and side windows. The wall space surrounding the windows can be used. Both windows are completely viewable from the street, however there are 2 steps to enter the venue itself.

Dimensions:

Front window (Sorauren Avenue) = 9'1" W x 7'1" H

Side window (Fern Avenue) = 4'2" W x 7'1" H

The sill on both windows measures 8" deep and is available for use. The floor space in front of the front window is also available for use (2 feet max).

Website: <https://mnross.com>



W14. Cafe Pastel

862 Dundas Street West
Window Installation

Description: Adjacent walls and floor areas next to the windows (preferably one side of the cafe).

Dimensions:

9.84" H x 4.92" W between mullions.

Website: www.cafepastel.ca



W15. Milky's

760 Dundas Street West
Window Installation

Dimensions:

2 windows = 54" W x 60" H

About 6" clearance from window to seating

Website: www.milkys.ca



W16. Design Republic at The Well

486 Front Street West

Window Installation

Barrier-free venue / wheelchair accessible from the street

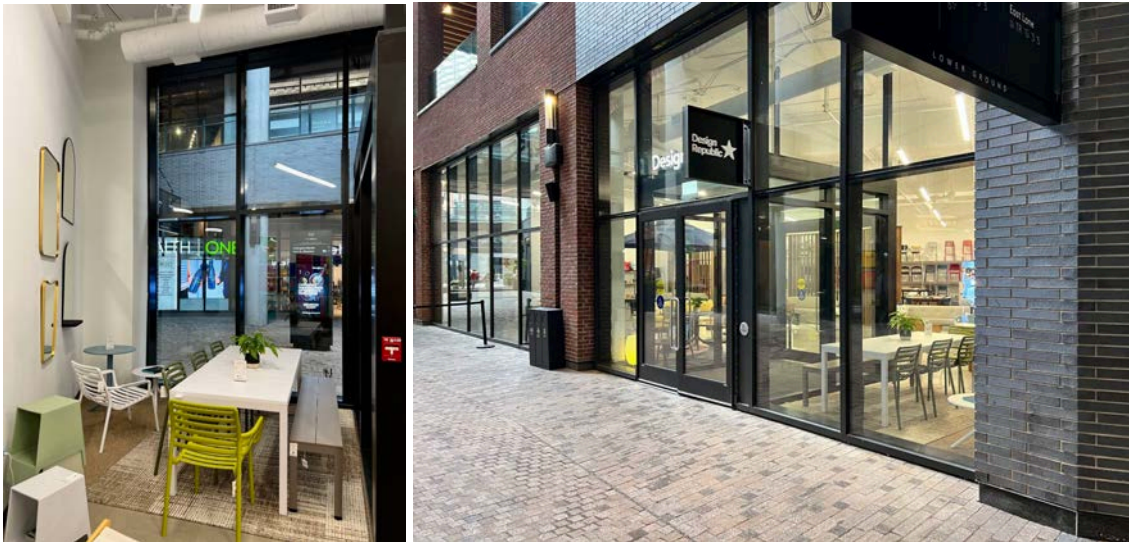
Dimensions:

2 Lower Windows = 50" W x 92" H each (divided by mullion)

2 Upper Windows = 50" W x 80" H each approximately

Floor Space = 110" W x 107" D

Website: www.mydesignrepublic.com



W17. Issues Magazine Shop

1489A Dundas Street West

Window Installation

Barrier-free venue / wheelchair accessible from the street

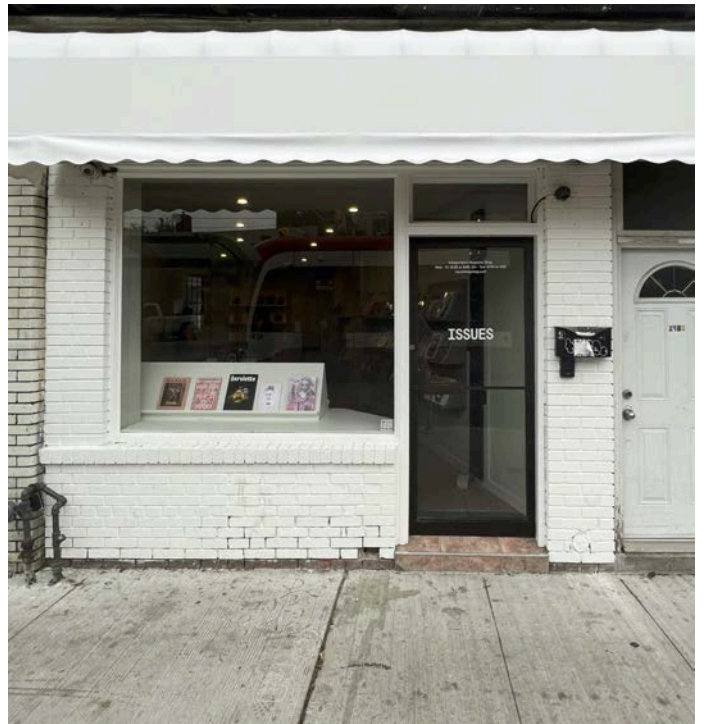
Dimensions:

Front window = 76" W and 70" H

The floor space inside the window is about 48" deep, running the length of the window.

Preference: Have previously had the best luck with freestanding sculptural work.

Website: <https://issuesmagshop.com/>



W18. STACKT market

28 Bathurst Street

Window Installation

Barrier-free venue / wheelchair accessible from the street

Description: STACKT is a 100,000 square foot community hub and public space. STACKT consists of 70,000 square feet of outdoor space and 30,000 square feet of indoor space. STACKT will be a hub of activity during the 2025 DesignTO Festival with multiple projects across the site. STACKT may have a site-wide event as part of the Festival – [see here for details](#) about the 2024 event. There are multiple windows across the site that are available for installations. Window installations at STACKT will be viewable by the public during site hours: 9am-11pm daily (closed Mondays).

Dimensions:

MoStreet Westindows = 44.5" W x 84.25" H with visual markers/decals at approx 55" from bottom. Installations may extend across multiple windows.

Website: www.STACKTmarket.com



W19. Swipe Design | Books + Objects

401 Richmond Street West

Window Installation

Barrier-free venue / wheelchair accessible from the street

Description: Visible from the exterior on Richmond Street West

Dimensions:

Window = 72" H x 71" W

12" deep inner brick sill

Website: www.swipe.com



W20. Mellah Rugs

309 Roncesvalles Avenue

Window Installation

Barrier-free venue / wheelchair accessible from the street

Dimensions:

2 windows = 68" x 68" x 68" each

Floor space = 80" x 80"

Preference: Would prefer a textile product or artist as a rug store, but are open to anything cool!

Website: www.mellah.ca



W21. The Drake Hotel

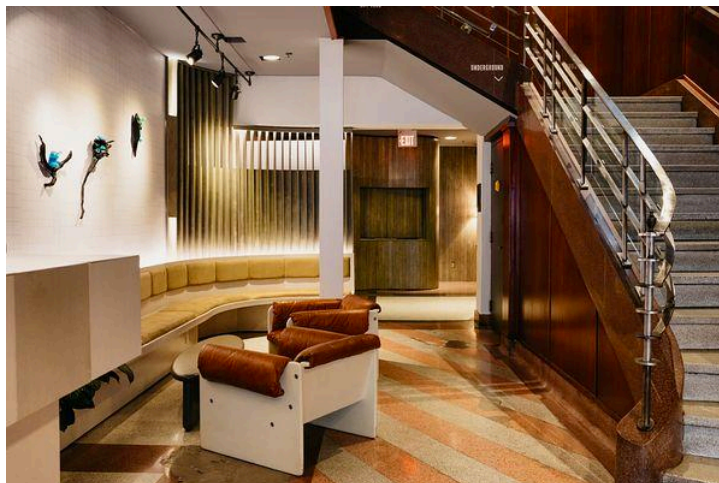
1150 Queen Street West

Window Installation

Barrier-free venue / wheelchair accessible from the street

Description: Open to hosting in any number of their zones including the Lobby or in one of their new spaces within the Drake Hotel expansion opening fall 2021. This would include an event in our new Rooftop Terrace Suite, an intimate venue that can accommodate 40-60 guests, or a larger space such as the Lobby or Lounge.

Website: www.thedrake.ca



W22. Sixteen Eleven Studios

1611 Dundas Street West

Window Installation

Barrier-free venue / wheelchair accessible from the street

Description: Opportunity for a window installation, event and exhibition!

Artists have full creative control with designing the space - walls, floors, window, ceiling (no holes in ceiling). The space is 800 sq ft.

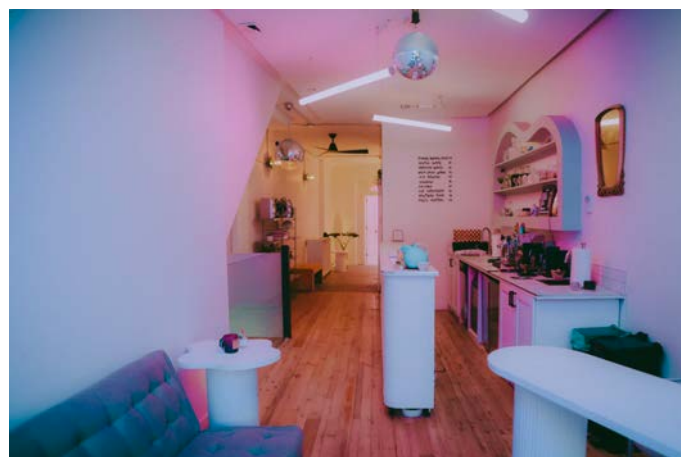
Dimensions:

Window = 5.6' W x 8.75' H

Window smaller partition = 2.16' W x 8.75' H

Preference: Large scale art works best in the space.

Website: www.sixteenelevenstudios.com



W23. VdeV

797 Dundas St West

Window Installation

Barrier-free venue / wheelchair accessible from the street

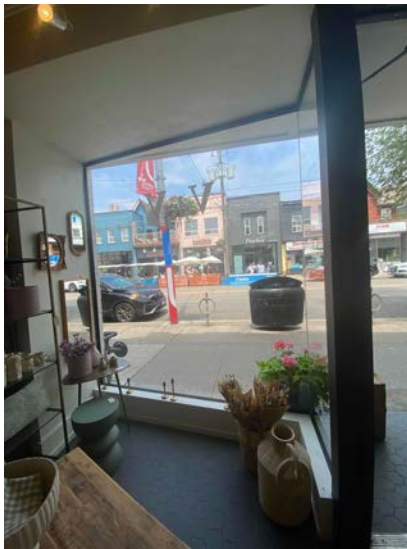
Dimensions:

East Window = 80" x 93"

West Window = 83" x 93"

Preference: Something that suits the host venue.

Website: <https://www.vdevmaison.com>



W24. Engel & Völkers Toronto City

71 King St East

Window Installation

Description:

The space offers wall to wall, almost floor to ceiling windows across the entire store front of the space.

Dimensions:

Boardroom = 10' Room Floor-to-Ceiling Height and 2 large windows of equal measurements (8' H x 6' 10" W each)

Foyer/Entrance: 12' Room Floor-to-Ceiling Height and 2 large windows of equal measurements on either side of entry (9' 5" H x 4' 8" W each)

Website: <https://torontocity.evrealstate.com/>



W25. Saving Grace

907 Dundas St West

Window Installation

Description:

There is a little landing in the window for items to be displayed. I.e. Two years ago a stool was displayed there.

Dimensions:

Front window area = 4' x 6'

Website: <https://www.instagram.com/savinggraceto/>



EVENT

An **event** runs one day during Festival Week, for a set period of time. Events can include a talk, a product launch, film screening, or a workshop.

V1. Estheteak Inc.

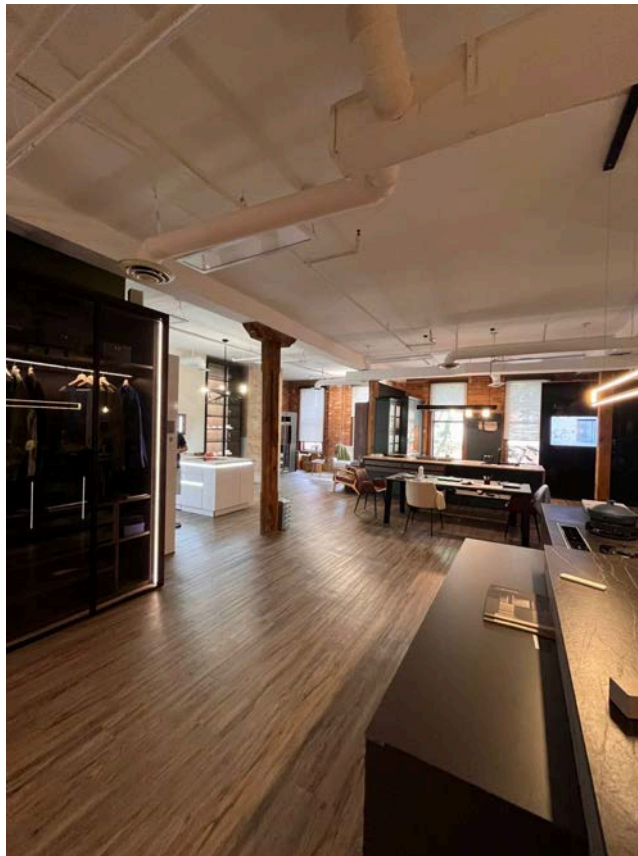
203-411 Richmond Street East

Event

Description: Have previously hosted lunch & learn events for about 25 people, standing, for sitting or workshop. Prefer to host around 10 people + hosts. The space is around 1,500-1,600 sq.ft.

Preference: Prefer to host a workshop, talk or networking wine & cheese event.

Website: <https://estheteak.com>



V2. ARD Outdoor Vondom Showroom

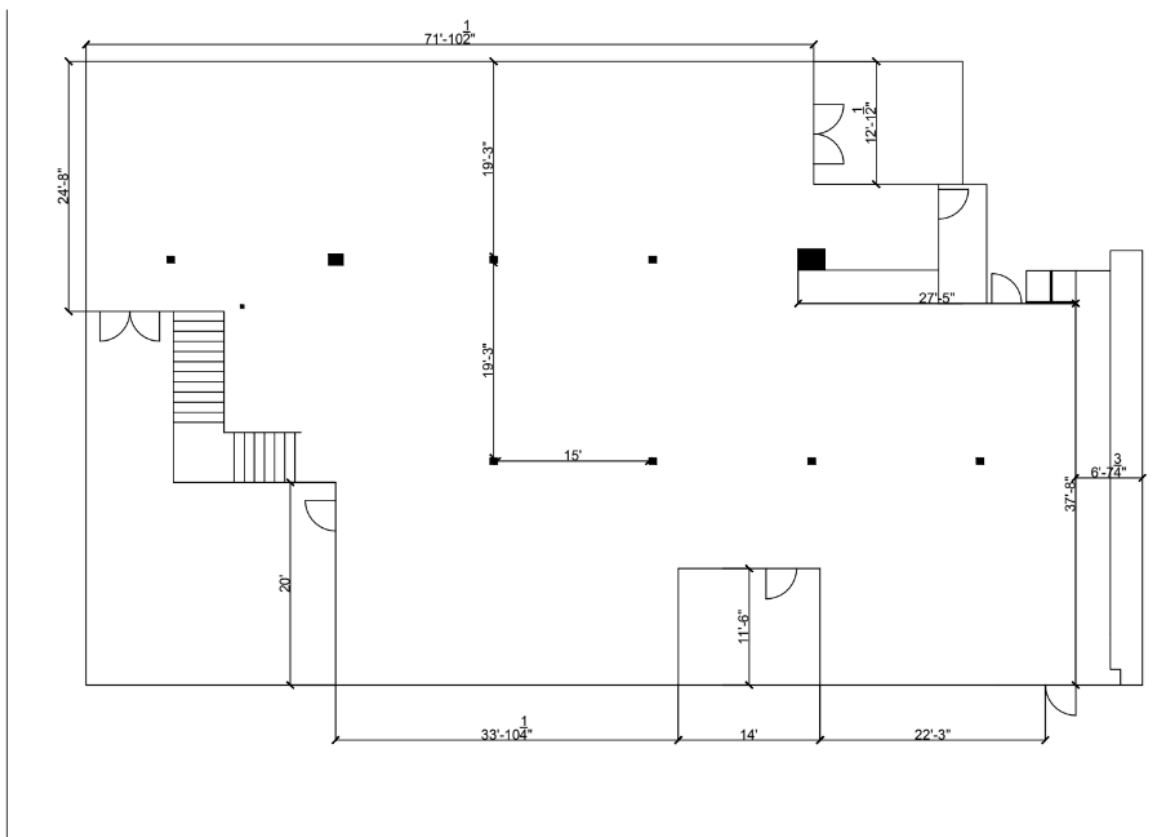
1184 Castlefield Avenue

Event

Barrier-free venue / wheelchair accessible from the street

Description: The showroom is approximately 8000 sq ft. Can fit up to 200 people standing and 150 sitting. It is a high-end outdoor furniture store and lot's of various sitting and lounging can be arranged.

Dimensions:



Preference: Prefer any event attended by the art & design community.

Website: www.ardoutdoor.com



V3. Euro Tile & Stone Showroom

80 Dufflaw Road

Event

Barrier-free venue / wheelchair accessible from the street

Description: A 17,000 sq ft showroom, filled with natural light and greenery, the space is inspired by the tranquillity of nature and carefully designed to foster creativity, passion, and inspiration. Capacity: 800 people. They have 30 chairs in the showroom and can arrange for more on the event day easily. Ample space for arranging projectors and doing presentations.

Dimensions: 110' x 170'. Note: Showroom has displays, tables, fixtures etc.

Website: <https://eurotilestone.com>



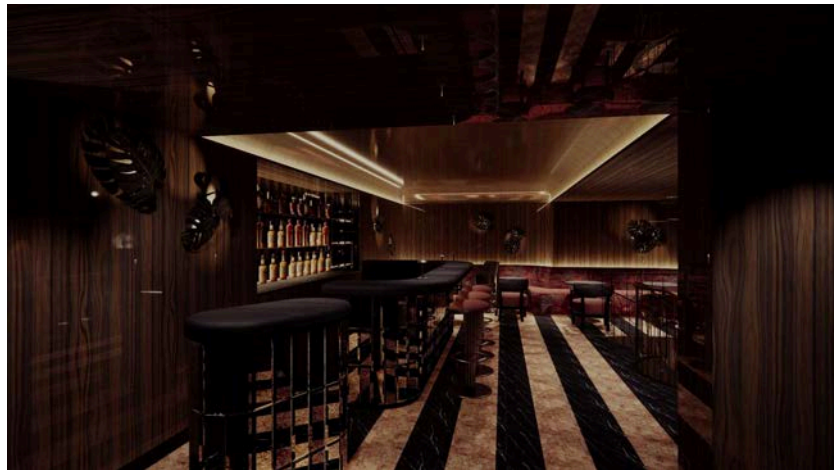
V4. ANML

NIVEK REMAS - 420A Wellington Street West
Event

Description: Approximately 48 seats indoor, 12 seats outdoor and 8 seats bar/lounge

Dimensions: 50' x 24'

Preference: Prefer interior design



V5. University Club of Toronto

380 University Avenue

Event

Barrier-free venue / wheelchair accessible from the street

Description: Two standout rooms that often host events: the Library (grand room facing University Street) and the Main Dining Room (which is a larger room with restored hardwood floors used for larger parties, wedding receptions and conferences). Both aforementioned rooms are connected by a long hallway, which has been used for receptions and bars between events. 250 people, and more intimate spaces as well.

Both rooms can be set up in various configurations, including with round tables, theatre seating, harvest table, or otherwise. Both rooms have a wood burning fireplace. Ballroom has built-in A/V including speakers, a large projection screen and LED lighting.

The Library: 40 Sitting (Rounds), 30 Sitting (Harvest), 90 Standing

Main Dining Room: 150 (Theatre Seating), 110 Seated (Rounds), 150 Standing

Dimensions:

Library = 20' x 44'

Main Dining Room = 32' x 46'

Preference: Open to hosting an event, party or exhibition. We have a private collection of Group of Seven artworks as many of their members are cultural and art enthusiasts. While they are typically a private members club, they select a small number of days/events each year to open their doors to the public.

Website: universitycluboftoronto.com



V6. The Drake Hotel

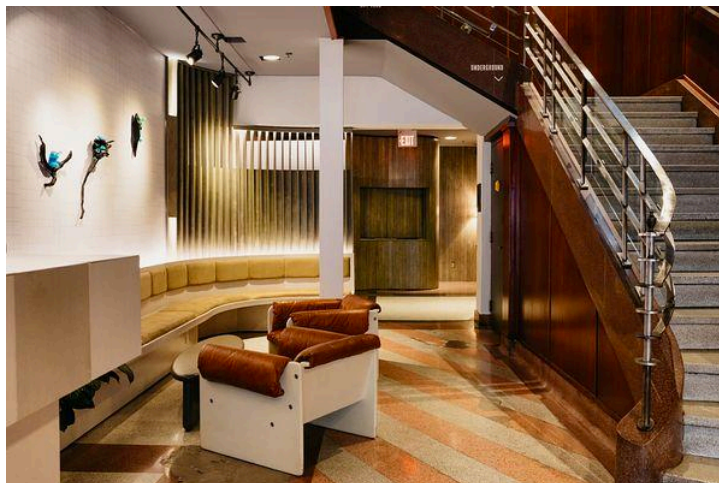
1150 Queen Street West

Event

Barrier-free venue / wheelchair accessible from the street

Description: Open to hosting this in any number of their zones including the Lobby or in one of their new spaces within the Drake Hotel expansion opening fall 2021. This would include an event in our new Rooftop Terrace Suite, an intimate venue that can accommodate 40-60 guests, or a larger space such as the Lobby or Lounge.

Website: www.thedrake.ca



V7. Sixteen Eleven Studios

1611 Dundas Street West

Event

Barrier-free venue / wheelchair accessible from the street

Description: Opportunity for a window installation, event and exhibition!

Artists have full creative control with designing the space - walls, floors, window, ceiling (no holes in ceiling). The space is 800 sq ft.

Dimensions:

Window = 5.6' W x 8.75' H

Door = 2.5' W x 6.33' H

Window smaller partition = 2.16' W x 8.75' H

Front lounge = 35.13' L x 9.38' W x 9.7' H

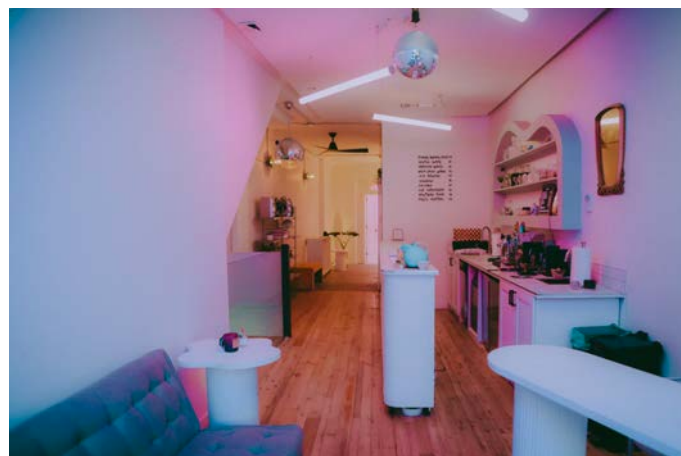
Front lounge smaller width = 6.16' W

Mid lounge = 16.56' L x 11.18' W x 9.58' H

Photo studio = 25.13' L x 9.58' W x 8.79' H

Preference: Large scale art works best in the space.

Website: www.sixteenelevenstudios.com



V8. STACKT market - Studio

28 Bathurst Street

Event

Barrier-free venue / wheelchair accessible from the street

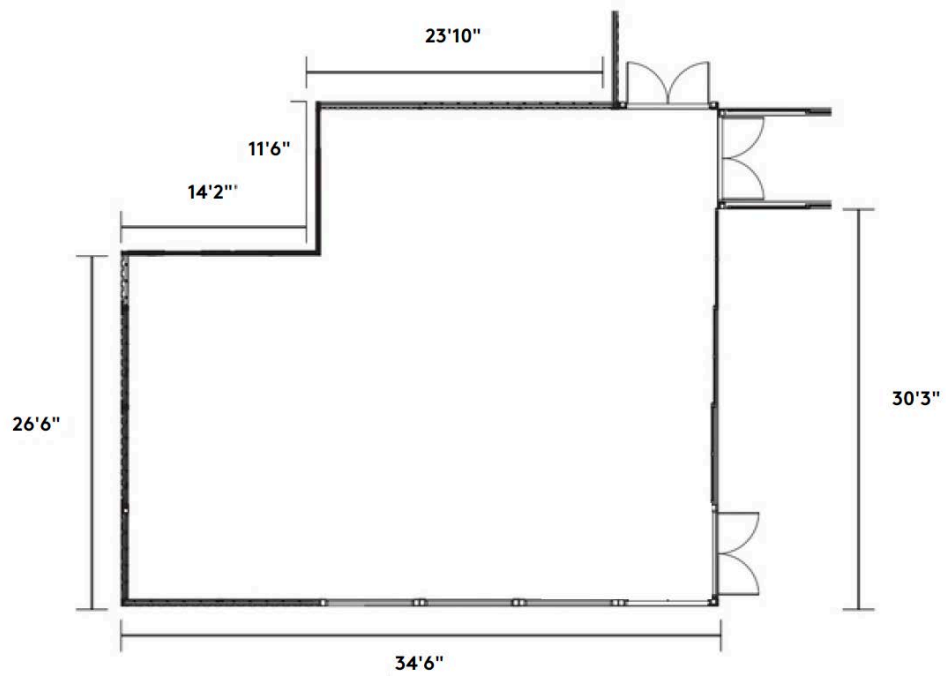
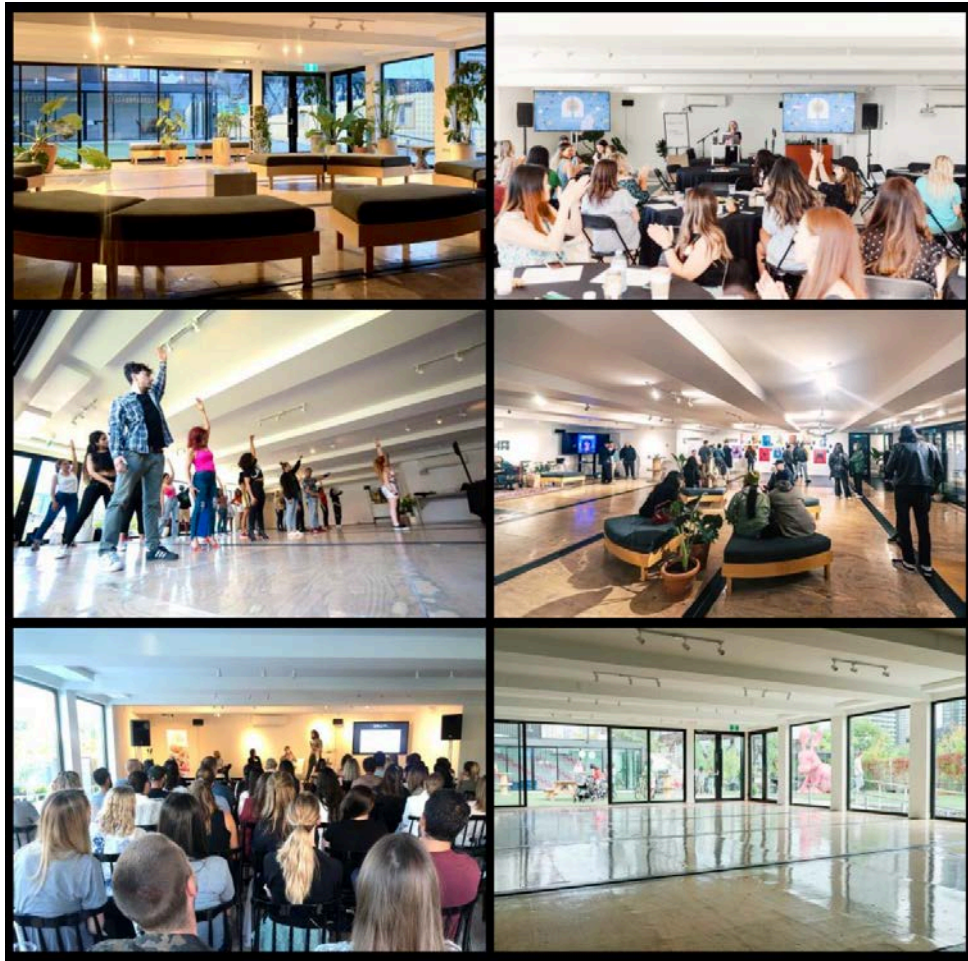
Description: STACKT is a 100,000 square foot community hub and public space. STACKT consists of 70,000 square feet of outdoor space and 30,000 square feet of indoor space. The Studio space is available for events during the DesignTO Festival. It is 1,600 square feet with over 80 ft of floor to ceiling windows for a bright environment with a vast amount of event opportunities. Space has a standing capacity of 100 people, dedicated WIFI, a bar, and access to power.

STACKT will be a hub of activity during the 2025 DesignTO Festival with multiple projects across the site. STACKT may have a site-wide event as part of the Festival – [see here for details](#) about the 2024 event.

STACKT is closed Mondays.

Website: <https://STACKTmarket.com/>





EXHIBITION

An **exhibition** runs more than one day during Festival Week. It is open to the public during regular business/gallery hours, and may include a window component. It can start before Festival Week, and end after Festival Week. It may also include an opening or closing reception, or artist/designer's talk.

X1. STACKT market

28 Bathurst Street

Exhibition

Barrier-free venue / wheelchair accessible from the street

Description: STACKT is a 100,000 square foot community hub and public space. STACKT consists of 70,000 square feet of outdoor space and 30,000 square feet of indoor space. The spaces have many windows, allowing for ample natural light as well as natural foot traffic from guests who walk by the area from STACKT's main path.

There are multiple exhibition opportunities available at STACKT. For each room, the walls and floors may be used. In some cases, pieces can be hung from the ceilings. Each space has a ceiling height of 9 feet.

STACKT hours are 12-8pm daily (closed Mondays); designers are asked to be on-site as much as possible throughout the course of their exhibition. Volunteers will be available to gallery-sit when designers are absent.

STACKT will be a hub of activity during the 2025 DesignTO Festival with multiple projects across the site. STACKT may have a site-wide event as part of the Festival – [see here for details](#) about the 2024 event.

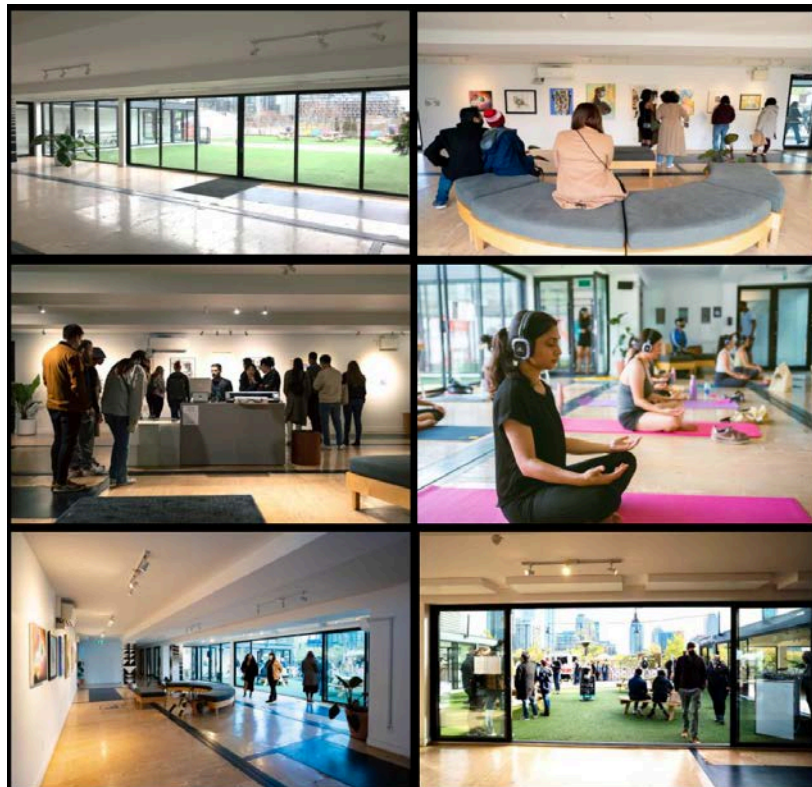
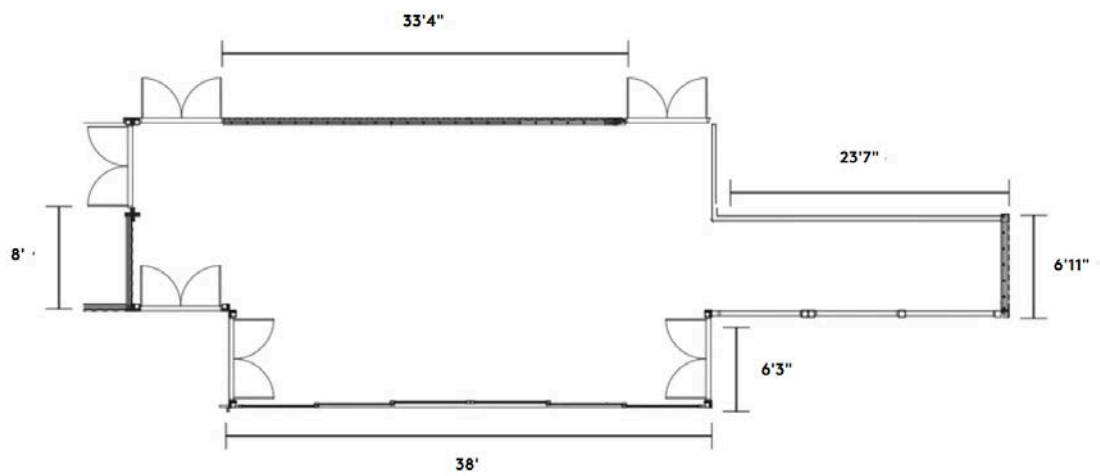
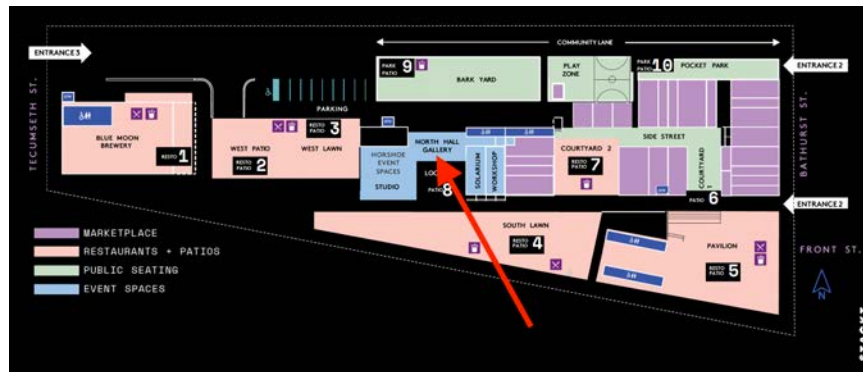
Preference: Large interactive pieces.

Website: <https://STACKTmarket.com/>

See next page for details about individual spaces at STACKT >>

STACKT – North Hall Gallery:

760 square feet

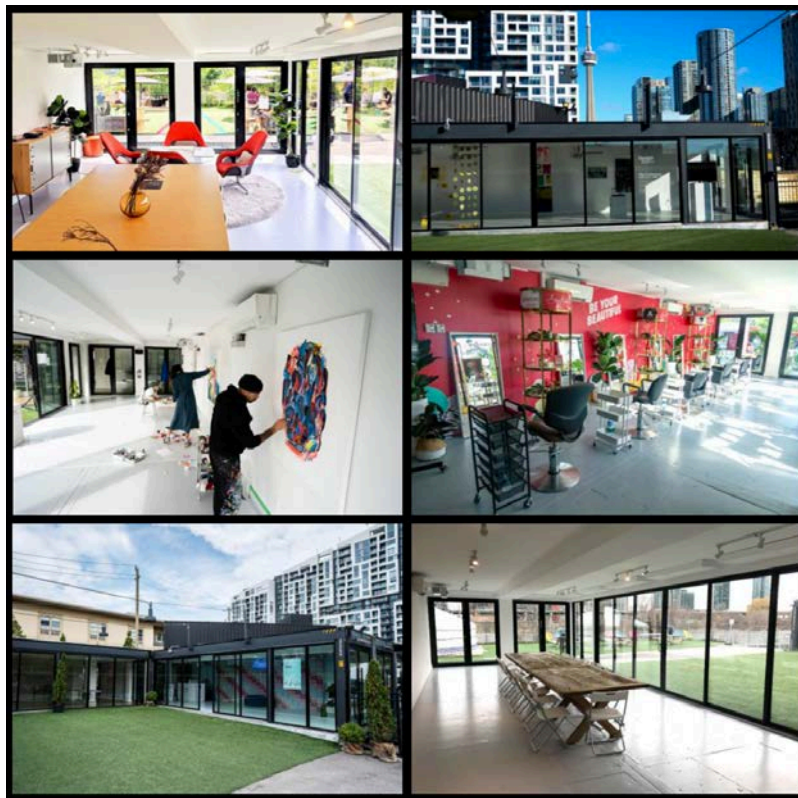
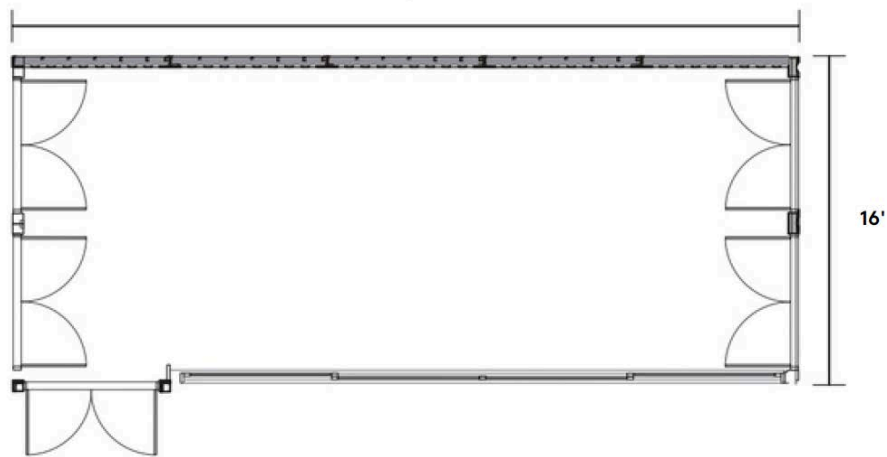


STACKT – Solarium:

585 square feet

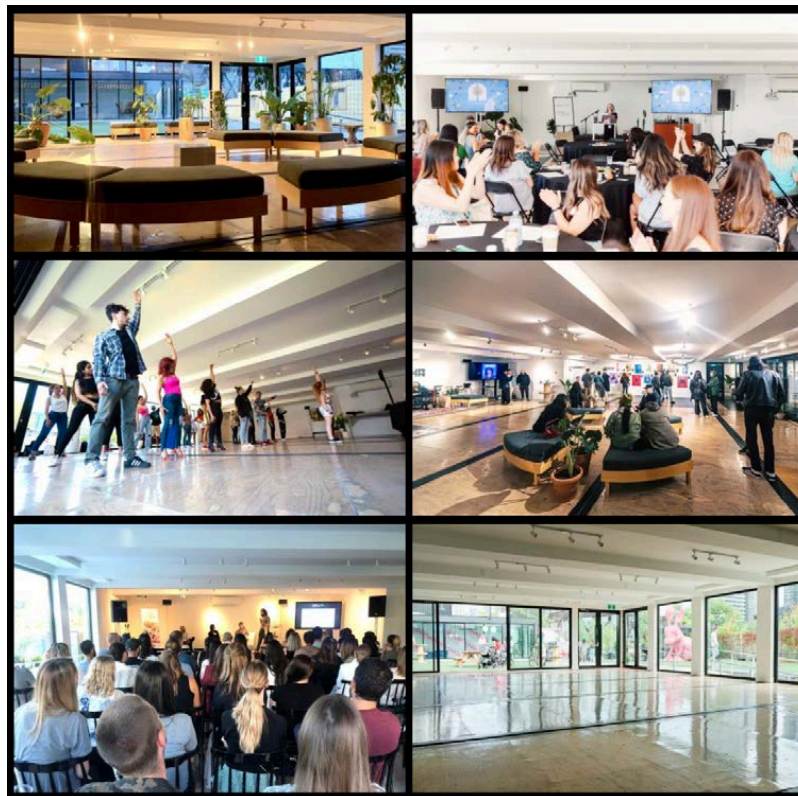
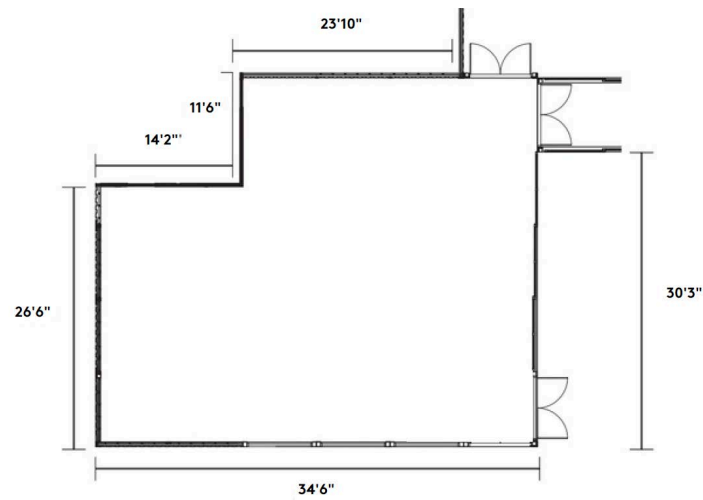


40'



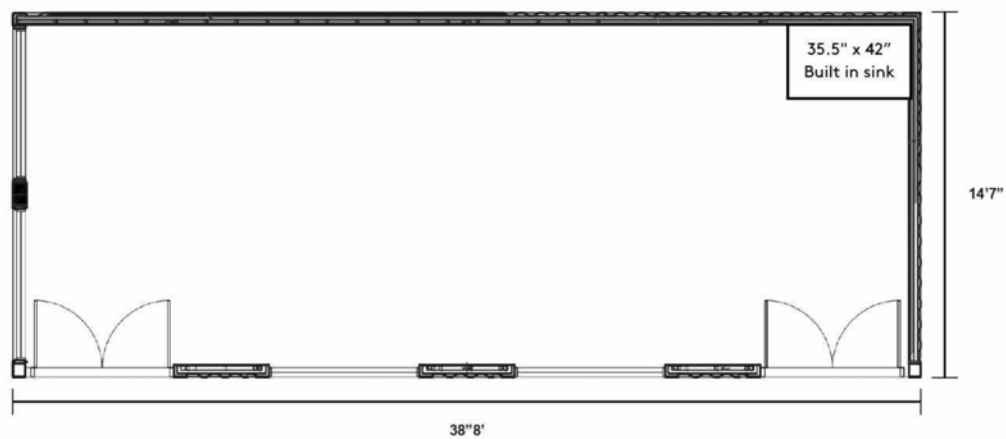
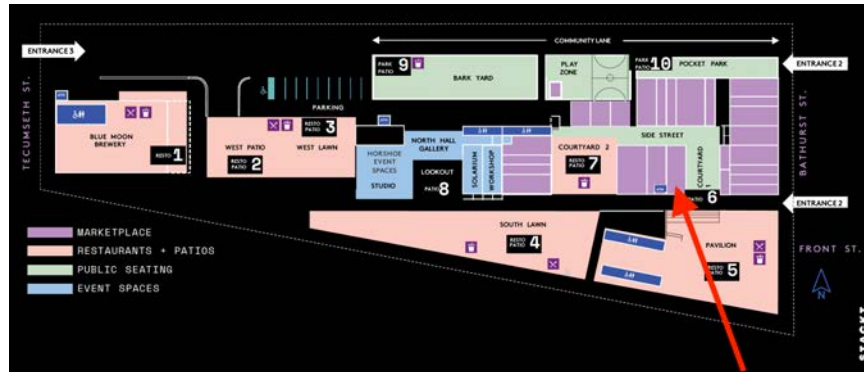
STACKT – Studio:

1600 square feet



STACKT – Unit 2-106:

Multiple windows, corner unit // multiple access points // direct sightlines from main gates // water access - single basin sink // unit comes turnkey with white walls, vinyl floors, HVAC, lighting + wifi and a sink



X2. Kiosk

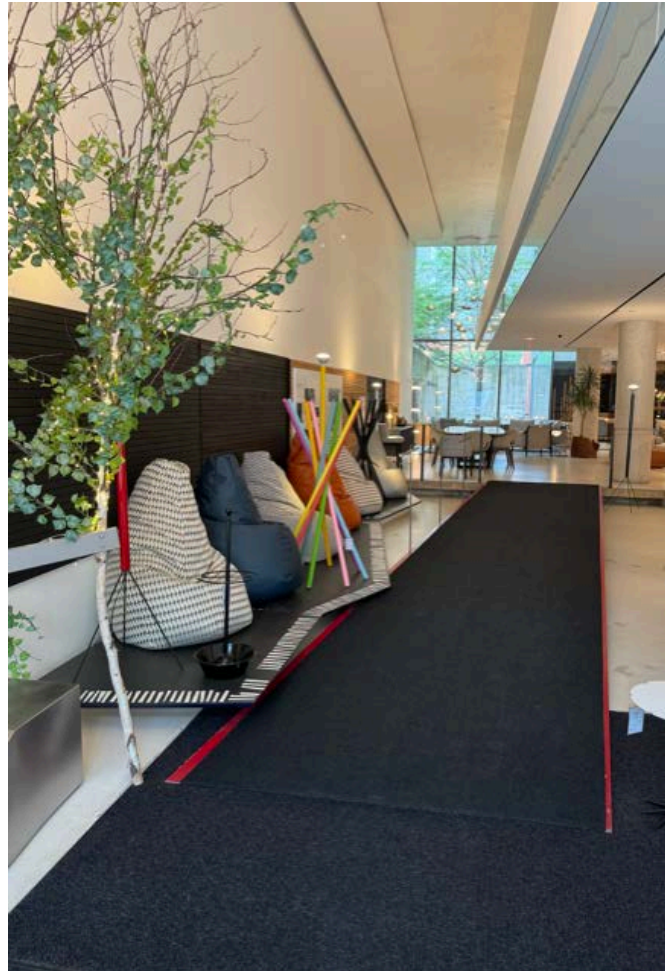
288 King Street East

Exhibition

Barrier-free venue / wheelchair accessible from the street

Description: Front walk-in ramp and landing of kiosk.

Website: kioskdesign.ca



X3. Urbanspace Gallery

401 Richmond West

Exhibition

Barrier-free venue / wheelchair accessible from the street

Dimensions:

The 1000 sq ft main space = 56' L and 20' W

The floor-to-ceiling height is 13' with 8' H drywall sections between brick and beam piers.

Website: www.urbanspacegallery.ca



X4. University Club of Toronto

380 University Avenue

Event

Barrier-free venue / wheelchair accessible from the street

Description: Two standout rooms that often host events in - the Library (grand room facing University Street) and the Main Dining Room (which is a larger room with restored hardwood floors used for larger parties, wedding receptions and conferences). Both aforementioned rooms are connected by a long hallway, which has been used for receptions and bars between events. 250 people, and more intimate spaces as well.

Both rooms can be set up in various configurations, including with round tables, theatre seating, harvest table, or otherwise. Both rooms have a wood burning fireplace. Ballroom has built-in A/V including speakers, a large projection screen and LED lighting.

The Library - 40 Sitting (Rounds), 30 Sitting (Harvest), 90 Standing

Main Dining Room - 150 (Theatre Seating), 110 Seated (Rounds), 150 Standing

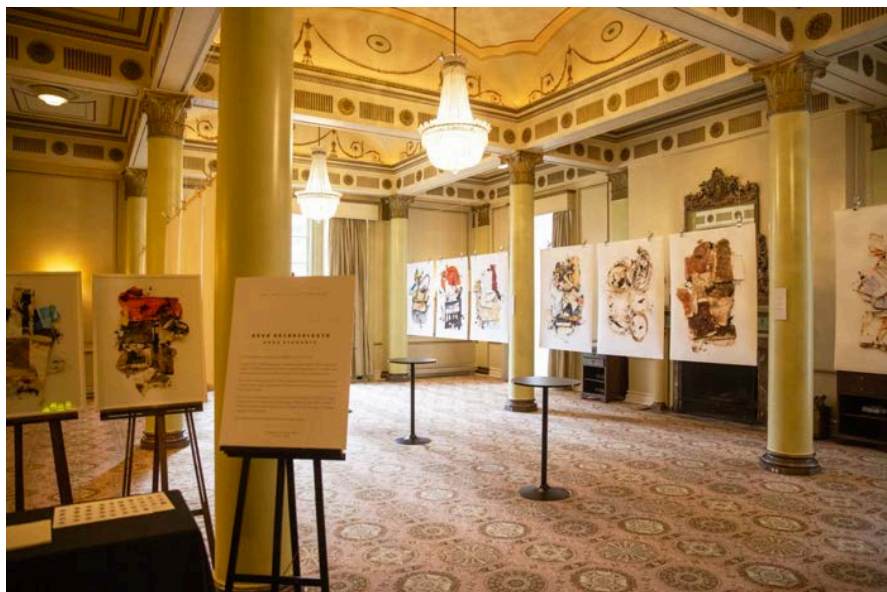
Dimensions:

Library= 20' x 44'

Main Dining Room= 32' x 46'

Preference: Open to hosting an event, party or exhibition. We have a private collection of Group of Seven artworks as many of their members are cultural and art enthusiasts. While they are typically a private members club, they select a small number of days/events each year to open their doors to the public. In the past, this has included Doors Open Toronto and the Scotiabank CONTACT Photography Festival.

Website: universitycluboftoronto.com



X5. 99 frames

527 Parliament Street

Exhibition

Barrier-free venue / wheelchair accessible from the street

Description: The store has 3 window display spaces which are visible to the public 24 hours a day from the outside. Inside the store, they have 2 spaces and one wall for art display. Inside of the store has open space which can be used for opening receptions and more art displays.

Dimensions:

Window display spaces = 44" x 96"

2 indoor spaces = 44" x 96"

Wall for art display = 12' x 13'

Open space = 13' x 16'

Website: <https://99frames.ca/>



X6. Ashley Botten Design Showroom

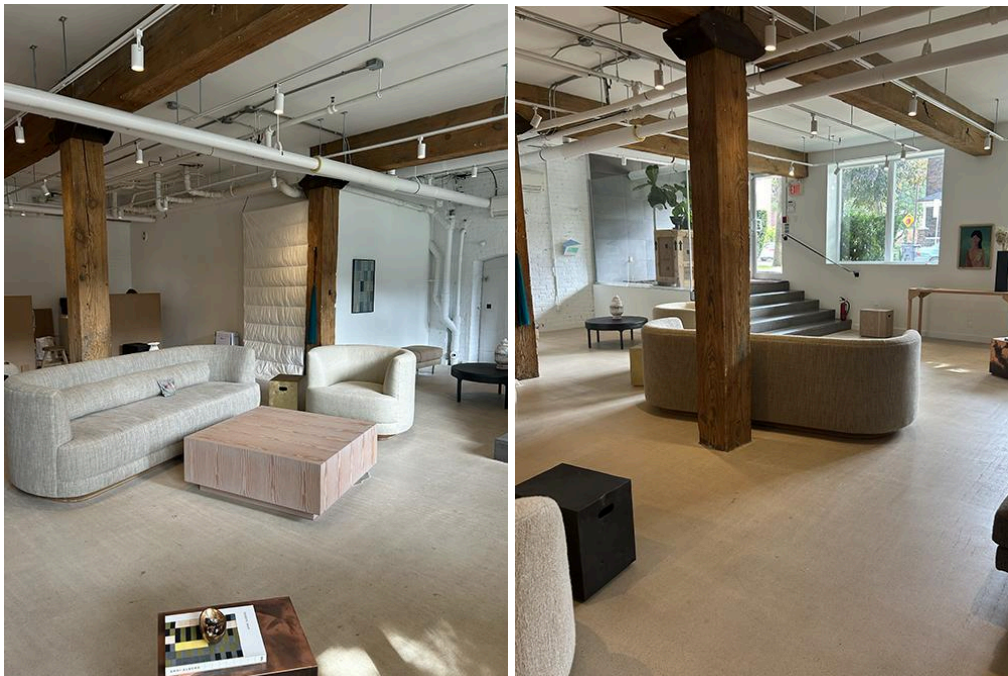
74 Stafford Street

Exhibition

Description: Walls, floors, ceiling available. Would want to keep Ashley Botten Design furniture within the space, having the exhibit and Ashley Botten Design pieces compliment each other.

Dimensions: 28' x 28' with 10' H ceilings.

Website: www.ashleybottendesign.com



X7. The Bakery

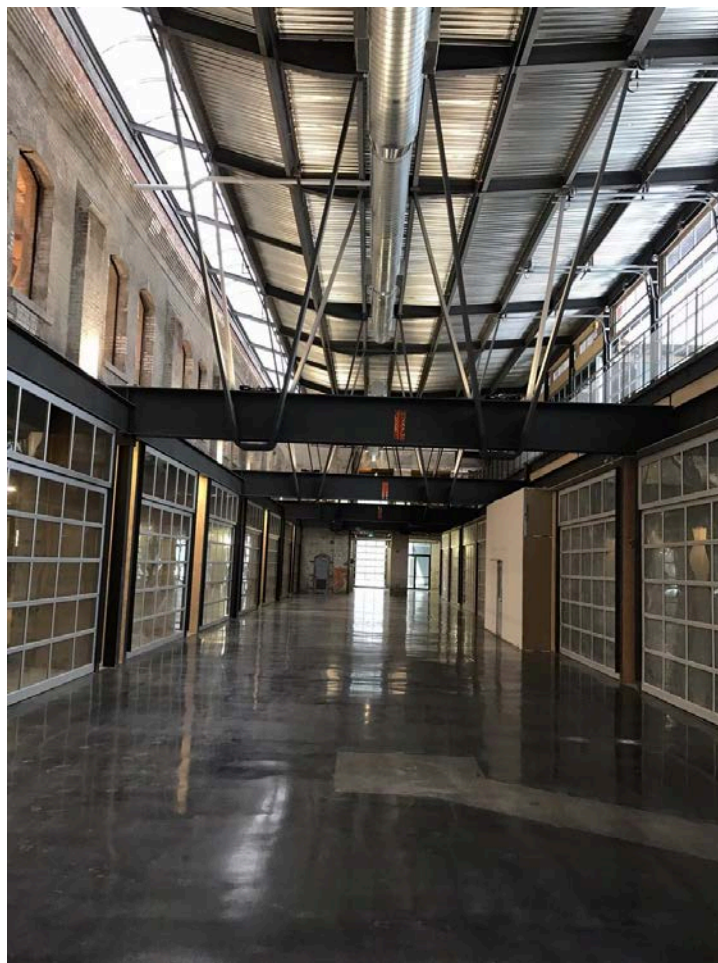
2 Fraser Avenue

Exhibition

Barrier-free venue / wheelchair accessible from the street

Description: The venue is a lengthy passage a block long; between Fraser and Mowat Avenue.

Website: yorkheritage.com



X8. Ace Hotel Toronto - Interspace

51 Camden Street

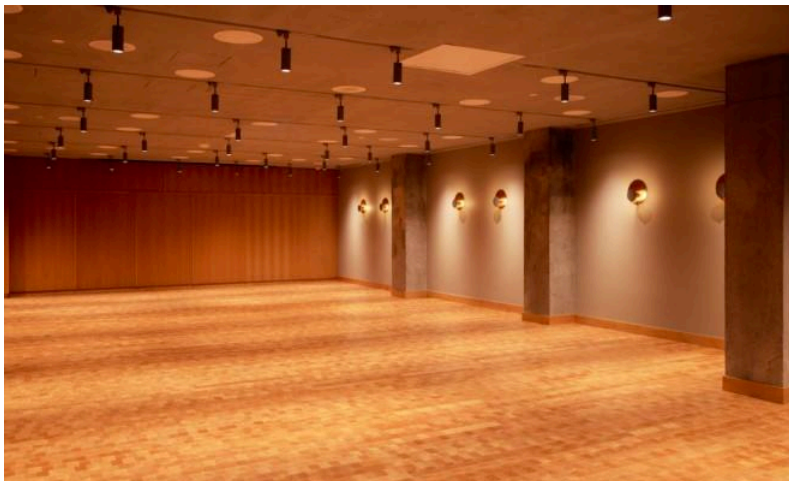
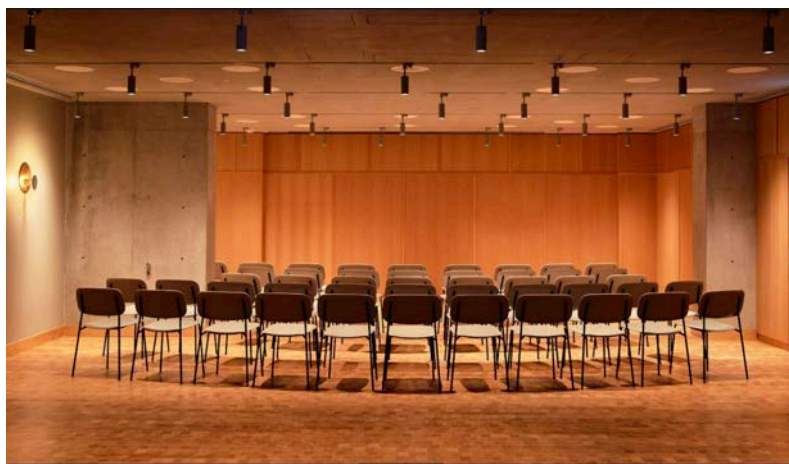
Exhibition

Barrier-free venue / wheelchair accessible from the street

Description: Interspace is 2000 sq ft

Dimensions: 52' L x 26' W x 9' H.

Website: <https://acehotel.com/toronto/>



X9. Richmond Hill Central Library

1 Atkinson Street

Exhibition

Barrier-free venue / wheelchair accessible from the street

Description: Three glass display cases. The centre case has built-in glass shelves.

Dimensions:

East Case = 12' 11" L x 3' 3" D x 6' 8" H

Centre Case = 13' 8" L x 3' 7" D x 6' 8" H

West Case = 13' 8" L x 3' 7" D x 6' 8" H

Website: <https://www.rhpl.ca>



X10. The Drake Hotel

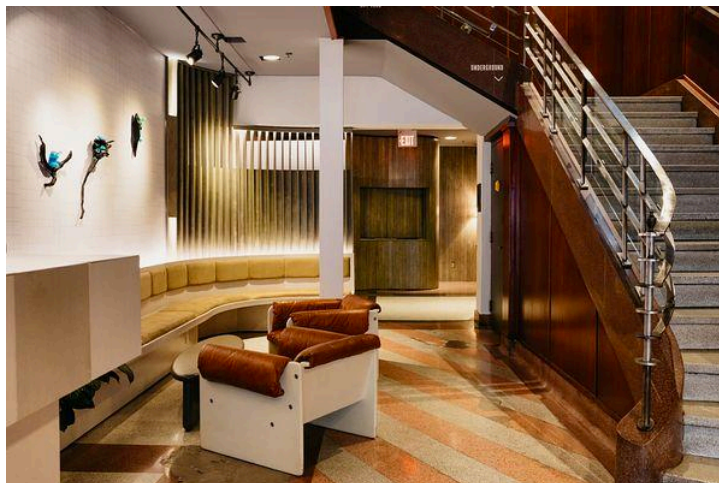
1150 Queen Street West

Exhibition

Barrier-free venue / wheelchair accessible from the street

Description: Open to hosting this in any number of their zones including the Lobby or in one of their new spaces within the Drake Hotel expansion opening fall 2021. This would include an event in our new Rooftop Terrace Suite, an intimate venue that can accommodate 40-60 guests, or a larger space such as the Lobby or Lounge.

Website: www.thedrake.ca



X11. Youngplace

180 Shaw Street

Exhibition

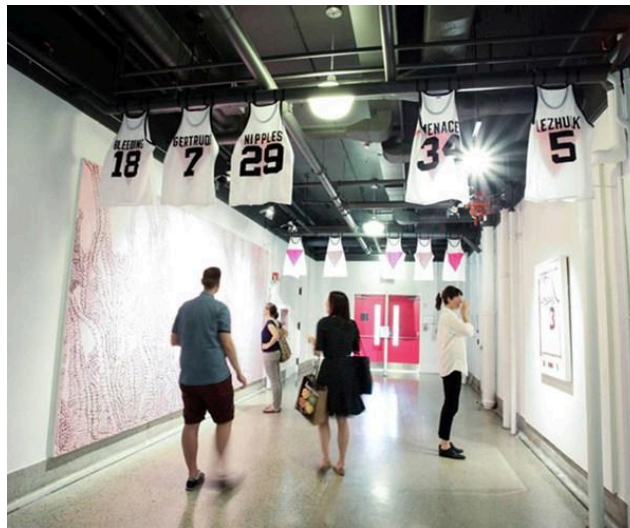
Barrier-free venue / wheelchair accessible from the street

Description: Youngplace has room on all three floors of the building to exhibit work in. The first floor space has 4 enclosed vitrines / display cases. The second and third floor have dedicated track lighting and drywall panels to display artwork.

Dimensions:

https://artscapeyoungplace.ca/wp-content/uploads/2018/05/AYP_HallwayGalleries_Packag_e.pdf

Website: <https://youngplace.ca/>



X12. Daniels Spectrum

585 Dundas Street East

Exhibition

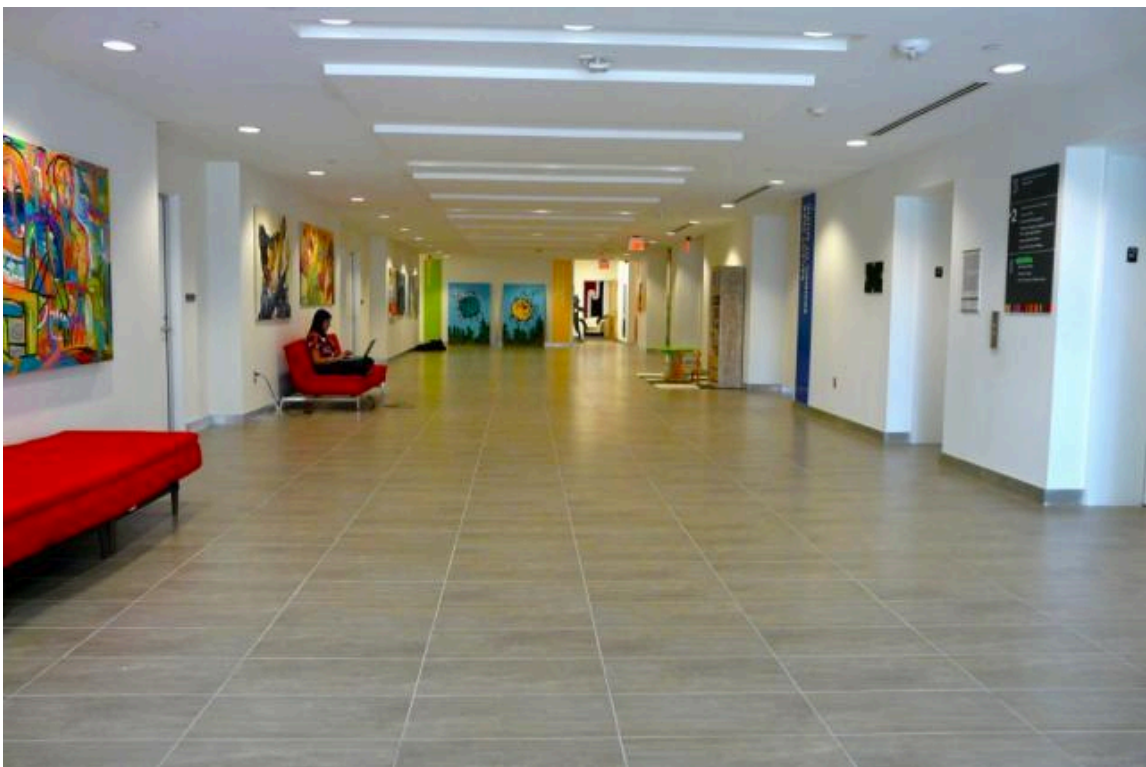
Barrier-free venue / wheelchair accessible from the street

Description: The Daniels Spectrum Hallway Galleries (2,500 square feet) are located on the main floor and on the second floor hallways of the Daniels Spectrum Building.

Dimensions:

The Main Floor has five walls with width dimensions ranging from 6.75' up to 15.6'. The Second Floor has over 11 walls with width dimensions ranging from 5' up to 37.5'.

Website: <https://danielsspectrum.ca/>



X13. Evergreen Brick Works

300-550 Bayview Avenue

Exhibition

Barrier-free venue / wheelchair accessible from the street

Description: Evergreen Brick Works is located on the historic site of the former Don Valley Brick Works and quarry—the site that made the bricks that built Toronto. In 2010, Evergreen transformed a collection of deteriorating heritage buildings into a global showcase for green design and an award-winning public space. Nestled in the heart of the Don Valley, you'll find yourself in a multi-sensory oasis bursting with life. Once a collection of heritage buildings, the Brick Works is now an immersive experience of community and sustainability.

The potential exhibition sites at Brick Works are many and extremely varied: some indoors, some outdoors (covered and not), some in more industrial areas and some closer to nature.

Preference: As a public space featuring programming focused on tackling the climate crisis and connecting the public to nature and the seasons, they prefer work that relates to these themes. They are flexible as to whether it's product design or art - it depends on how it aligns with the unique spaces of EBW.

Website: <https://www.evergreen.ca/evergreen-brick-works/>



X14. Sixteen Eleven Studios

1611 Dundas Street West

Exhibition

Barrier-free venue / wheelchair accessible from the street

Description: Opportunity for a window installation, event and exhibition!

Artists have full creative control with designing the space - walls, floors, window, ceiling (no holes in ceiling). The space is 800 sq ft.

Dimensions:

Window= 5.6' W x 8.75' H

Door= 2.5' W x 6.33' H

Window smaller partition= 2.16' W x 8.75' H

Front lounge= 35.13' L x 9.38' W x 9.7' H

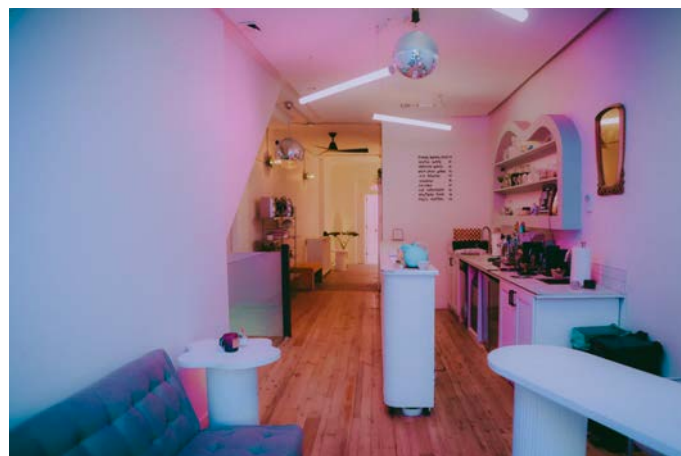
Front lounge smaller width= 6.16' W

Mid lounge= 16.56' L x 11.18' W x 9.58' H

Photo studio= 25.13' L x 9.58' W x 8.79' H

Preference: Large scale art works best in the space

Website: www.sixteenelevenstudios.com



X15. Miraki Life Workspace

35 Golden Avenue

Exhibition

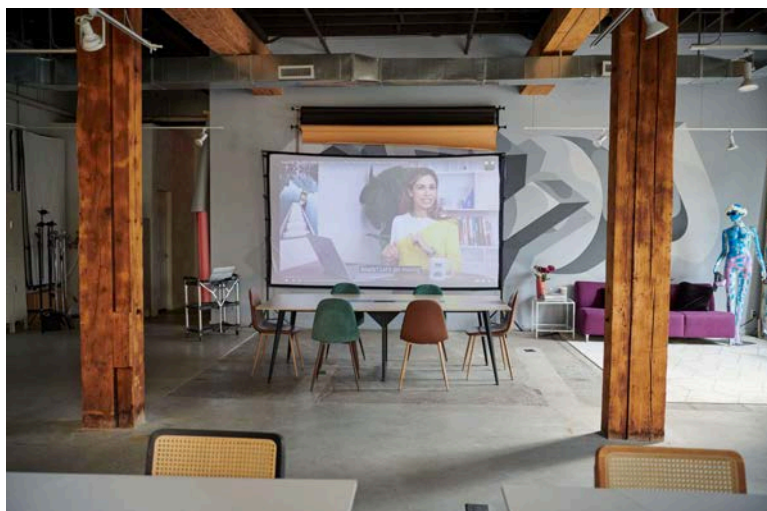
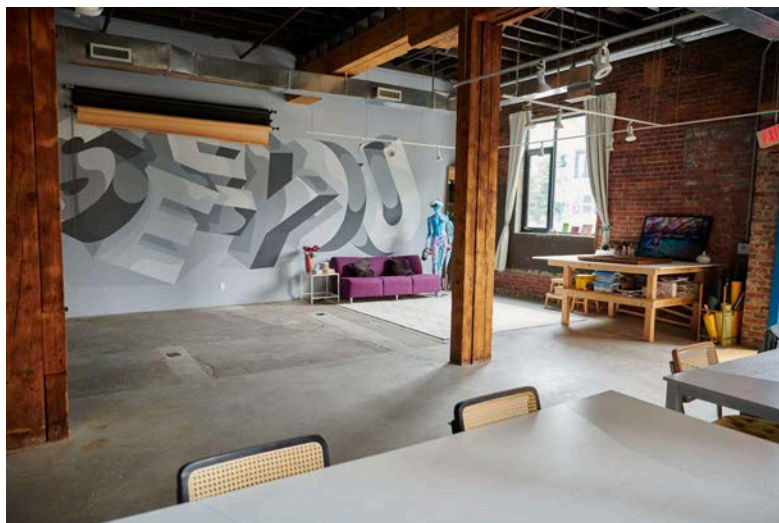
Barrier-free venue / wheelchair accessible from the street

Description: Miraki Life Workspace is a 1,400 sq ft coworking and studio rental located on the main floor with easy street access for equipment loading and walk-ins. The space is furnished with tables, chairs, and a sofa, creating a versatile and welcoming environment. There are exposed brick walls available for use, adding a unique aesthetic element. Furniture is flexible and can be arranged as needed for installations, while still ensuring accessibility for coworking activities. Their goal is to create a dynamic space where members and the public can cowork in an enhanced environment, seamlessly blending a design exhibition with everyday work.

Dimensions:

The central area = 14' W x 20' L, with a ceiling height of 13' and equipped with track lighting.

Website: www.mirakilifeworkspace.com



X16. Mararamiro

2090 Dundas Street West

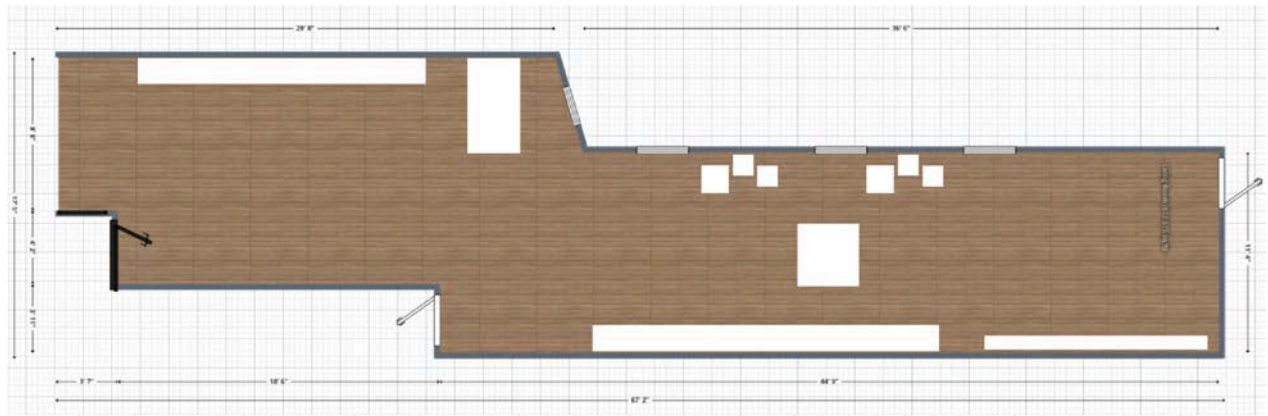
Exhibition

Barrier-free venue / whe

Description: Front window, floor to ceiling windows, walls and some floor space, plinths and platforms are available. Retail store is 900 SF, roughly 200 available for exhibition

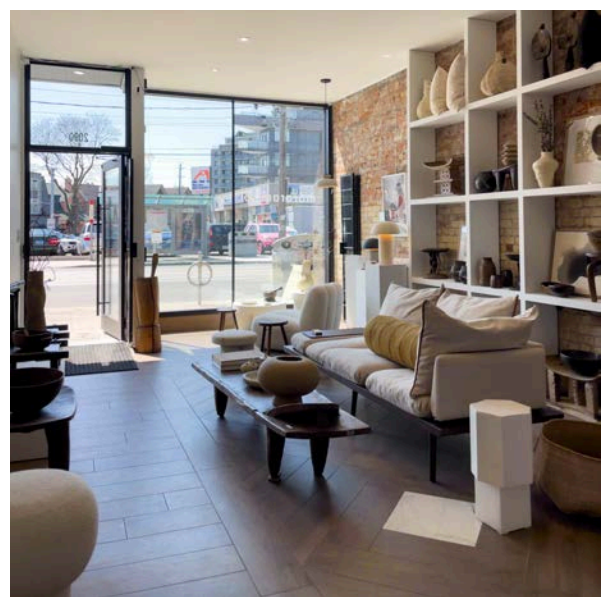
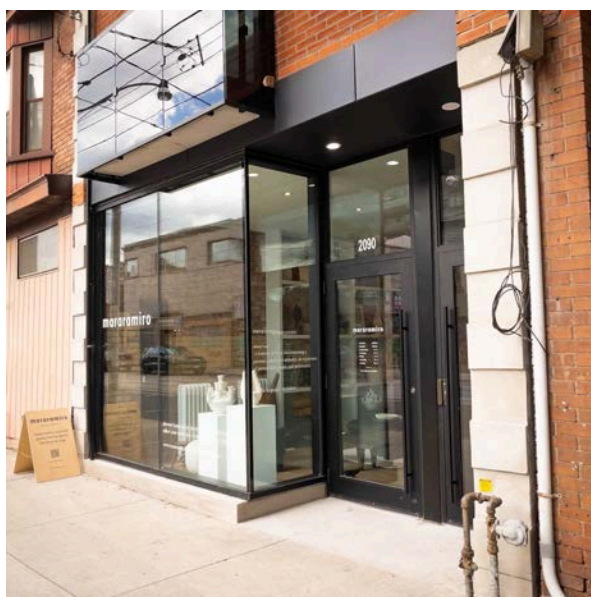
Dimensions:

25' x 7' of floor space with 10' H Ceilings



Preference: Home decor store, anything furniture, art, decor related would be ideal.

Website: www.mararamiro.com



X17. Euro Tile & Stone Showroom

80 Dufflaw Rd

Exhibition

Barrier-free venue / wheelchair accessible from the street

Description: A 17,000 sq ft showroom, filled with natural light and greenery, the space is inspired by the tranquillity of nature and carefully designed to foster creativity, passion, and inspiration. Capacity: 800 people. They have 30 chairs in the showroom and can arrange for more on the event day easily. Ample space for arranging projectors and doing presentations.

Dimensions:

110' x 170'. Note: Showroom has displays, tables, fixtures etc.

Website: <https://eurotilestone.com/>

